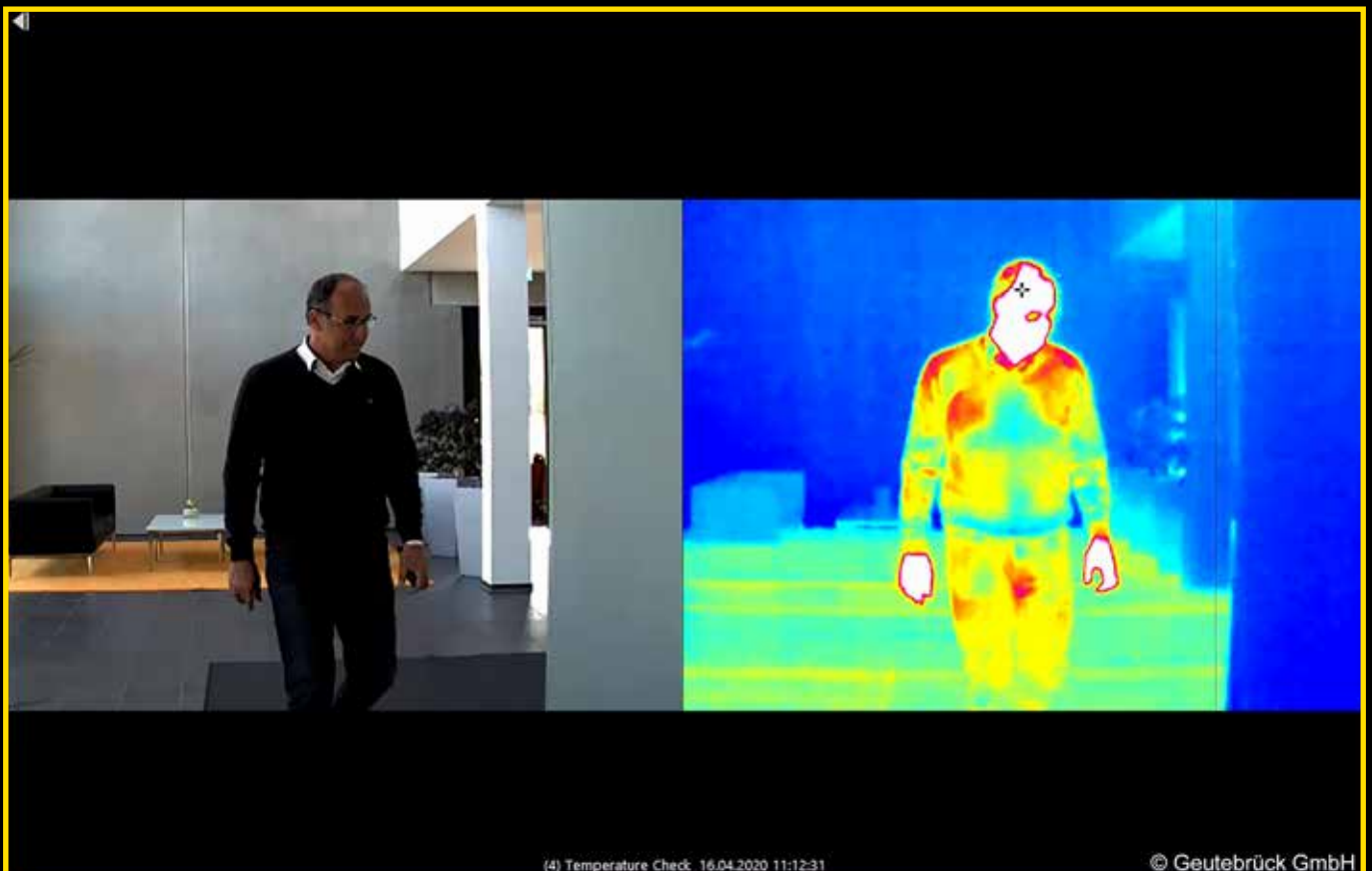


## Body Temperature Measurement



# Real-time body temperature measurement

Geutebrück's complete solution for body temperature measurement via camera image detects the temperature of a person as soon as he or she enters your facility.

Our convenient solution includes a thermal camera and a HD video camera as well as a mini PC (G-ST) and is suitable for mobile as well as fixed installations.

The user-friendly software automatically determines whether the preset body temperature threshold is exceeded and alarms the operator..



## **Temperature Measurement**

Accurate temperature measurement of the persons using the thermal camera.



## **Alarm**

An alarm with the corresponding video image is displayed in real time on your monitor, tablet or smartphone.



## **Protection**

Affected persons can be stopped directly at the entrance and receive appropriate care.

## Area of application: ministries, authorities, offices and town halls



Given the current situation, it is especially important that government and administrative departments, offices and city halls are in a position to work seamlessly to manage a crisis and arrange aid.  
In this context, the focus is on the welfare of officials and staff. Our supply system would collapse otherwise.  
Temperature measurement systems at the entrances to the buildings reliably detect deviations from the standard temperature.

## Area of application: Airports / Stations / Border crossing points



People from many different parts of the world gather at airports, train stations and border crossings.

The automatic temperature detection system shows staff deviations from the norm quickly and easily - also when large groups are present.

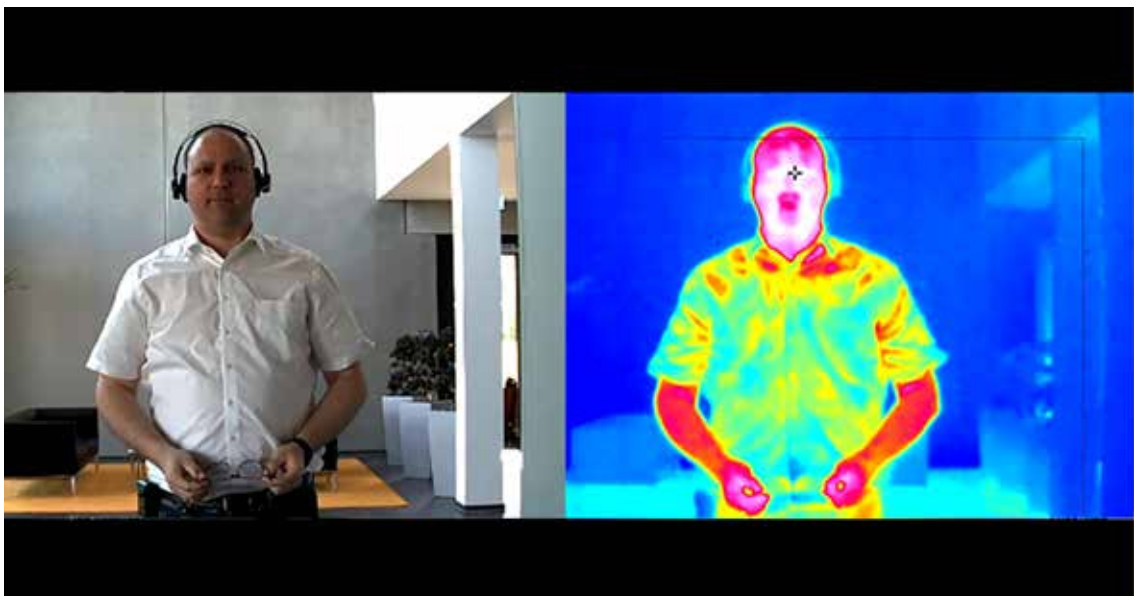
# Area of application: Public Transport



The mobility of people, especially in cities and metropolitan areas, is highly dependent on public transport.

All passengers wish to be taken safely, on time and in safety to their place of work, to the doctor, to shopping in the city centre and many other destinations.

Stationary temperature measuring systems at neuralgic traffic hubs or as mobile systems in the vehicles provide real-time information about deviations from the set threshold value.



Talk to us.

We will support you with the planning and construction of your system.



## We are Geutebrück

- 50 years' experience in the field of video management ...
- ... with our own development on site.
  
- From the first day: Made in Germany ...
- ... and represented worldwide by sales and service partners..



# GEUTEBRÜCK